

The Design Process...



Walton Park

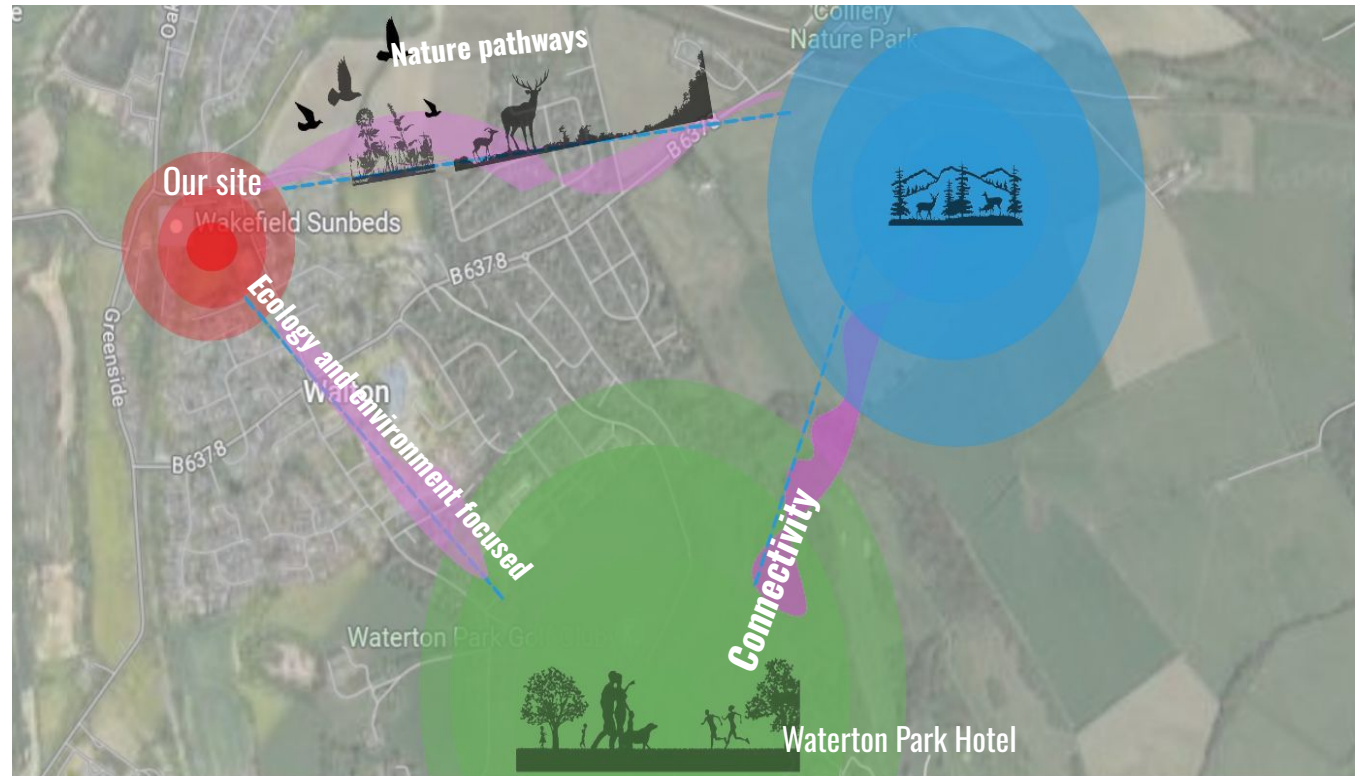
*By Aimee, Georgie, George, Sanaa,
Mohamed, Maire & Charles*

Phase 1 ... Understanding Surroundings

Important Ecological Corridor:

The park acts as a key ecological pathway for local wildlife. It is particularly important for connecting Waterton Park and Walton Colliery Nature park to the greater wakefield area

A key component to our design process will be to look at enhancing the ecology of the area



*Bringing sense of connectivity and
ecological value*

Phase 1 ...
Understanding Surroundings

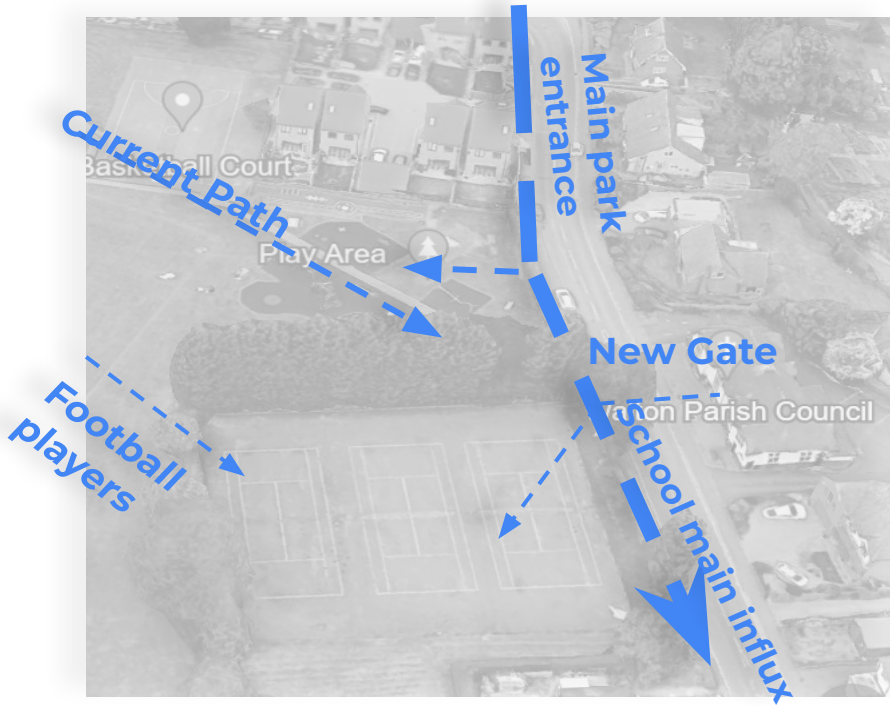
Park Boundary

Walton Park,
Parish Recreation
Ground

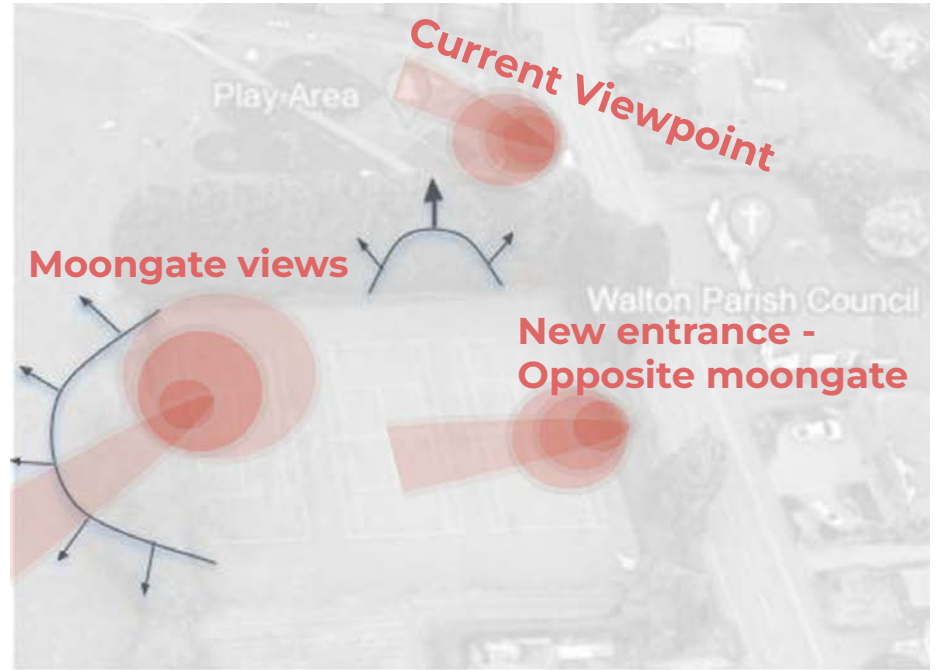
Tennis Court



Phase 1...
Site Analysis

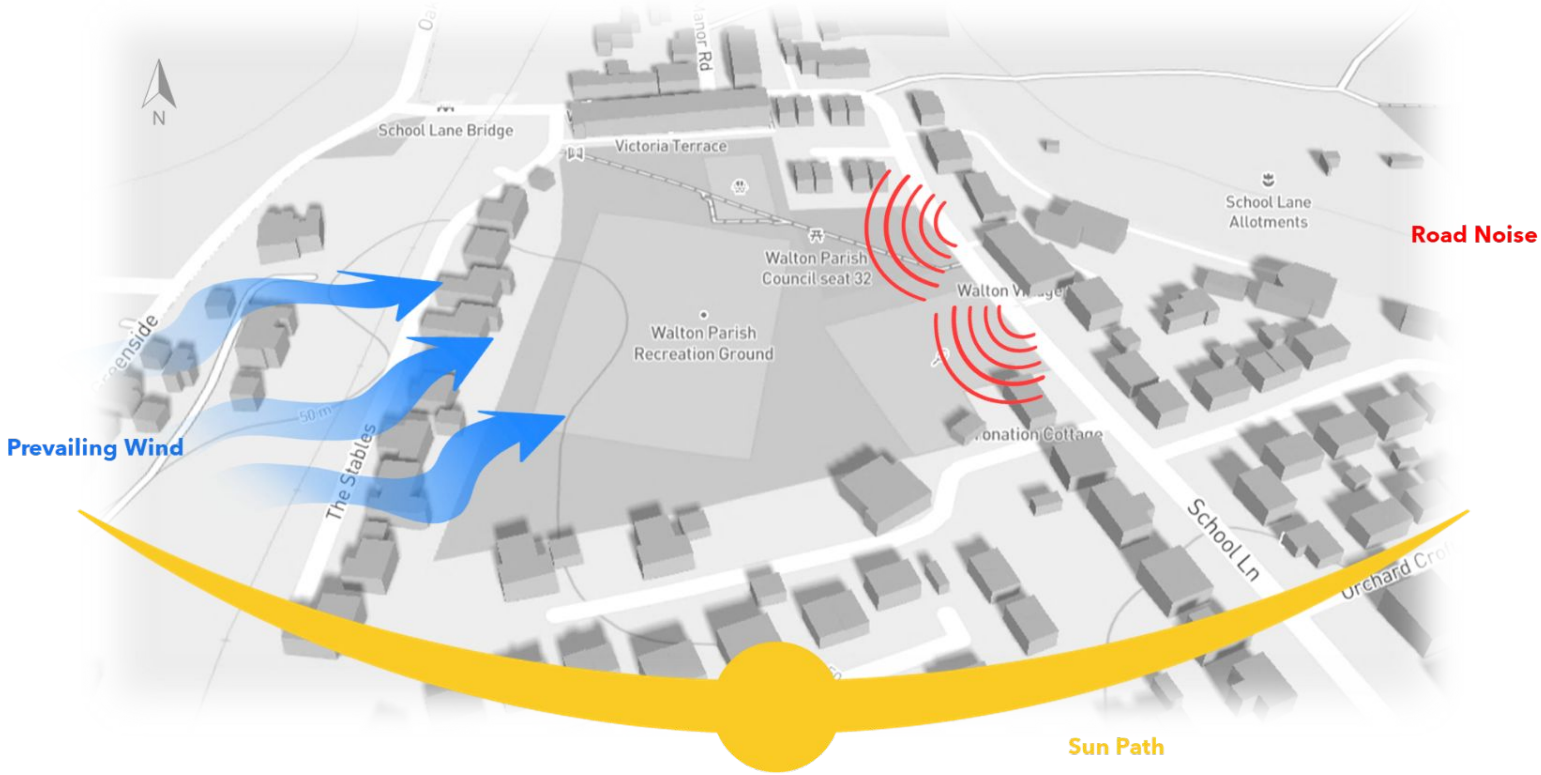


Pedestrian movement



Key viewpoints

Phase 1 ... Site Specific Analysis - Climatic Effects



Phase 1 ... Site Analysis

Park residents

The users of the park are at the heart of this great place.

That's why it's essential for us to know the surrounding community that look out for this space.

The park also hosts a variety of sporting events such as competitive football matches and basketball

-  = School Lane
-  = The Stables Road
-  = Detached Houses
-  = Terrace Houses
-  = Parish Church



Phase 1... Key Census Statistics



Walton community library: A key gathering spot for the elderly and young families



Walton Primary Academy: The main school in the area, it educates 370 children from the ages of 3 - 11



Age

30% - 55% of the population is over age 65 or over - considerably above the average of the county area

- 40% - 58% of the population is 16 – 64 years old - *average with the county area*
- 14% - 17% of the population is 16 or under - *average with the county area*



Education

- 15% are full time students, 85% not



Ethnicity

98.5% of the population is white - considerably above the average of the country



Housing

- 99% of the population live in whole houses/bungalows



Disability

- <10% of the population have a disability

Phase 2... Site Visit



Main entrance to Walton Park



Millennium memorial with small gathering area



Current playpark



Disused clay tennis courts are overgrown



Old tennis pavilion with toilets



Grass with desire line



The South entrance



The council's war memorial

Phase 2... Current Site Analysis

From our perspective...

There was plenty of opportunities on site,

Lowering the boundary, connecting spaces

Transforming the tennis court into sensory experience

Pavilion a new purpose

New additions based on community feedback such as water feature, mounds, interactive games



Phase 2 ... Existing Vegetation



Bedding mix



Weigela



Yucca aloifolia



Weigela



Prunus avium



Crataegus monogyna



Alnus cordata? Conference Pear?



Fraxinus excelsior (possible die back)



Conference Pear?



Acer pseudacorus

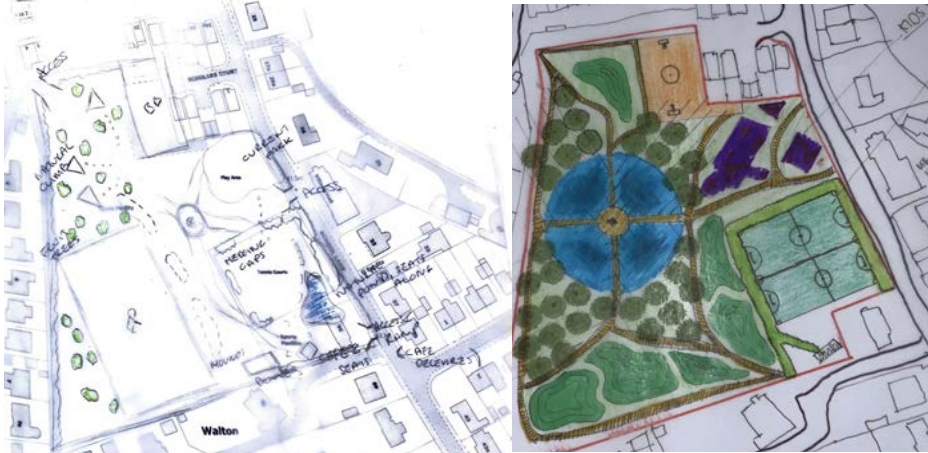


Overgrown clay tennis court



Populus nigra

Phase 3... Initial Designs Rough Sketches



Common themes:

Pond

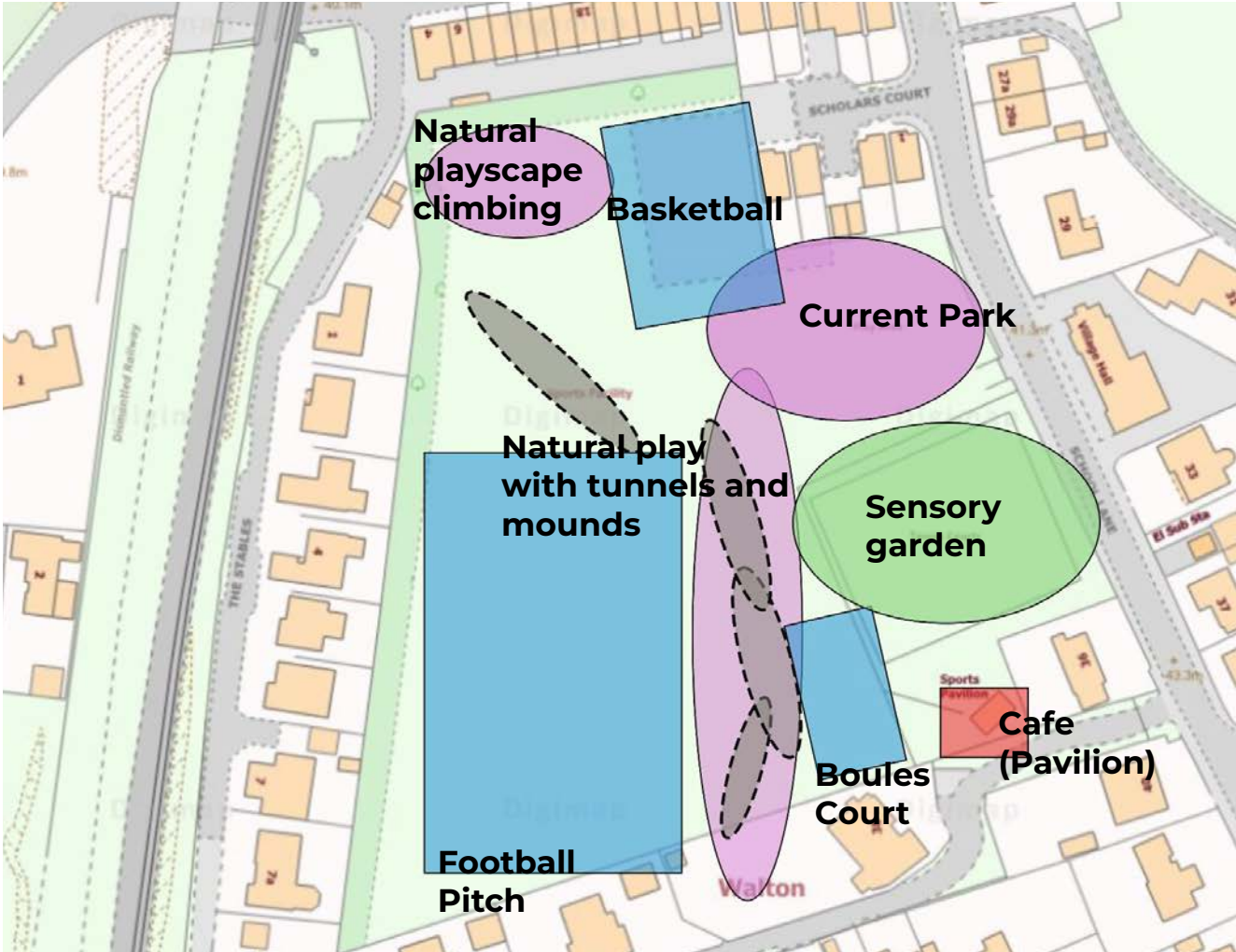
Connected pathways

Wild flower meadows

Interactive mounds

Historic relevance

Phase 3...
Initial Ideas
Zoning Diagram



Phase 4 ... Community Feedback



Redesigning Walton Park

We are Landscape Architecture students and need your help to redesign the old tennis courts!



Our Previous Work...

Please scan this QR code and answer the questions to help us to gather information for our design



Please attend our presentation on the 2nd of November to see our design ideas! - See Facebook for details.

Phase 4...

What we took from your feedback

POSITIVES

CONCERNS

Do you remember this!?

Very popular idea
Innovative way to create viewpoints and keep the hedge



MOON GATE



Mounds with tunnels create natural barrier



Very popular idea
Involve the children and ask them to design a stone in class



Redesigning Walton Park



PATIO

Natural pond good for wildlife

Child safety hazard



SHELTER

Helpful for shading

Worried about anti social behaviour ruining it



GATHERING SPACE

Do not relocate
Known in town as special centre
epice



RAMP

WATER FEATURE



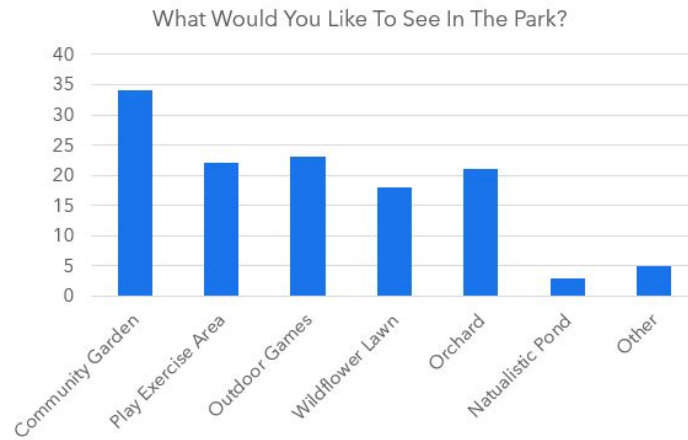
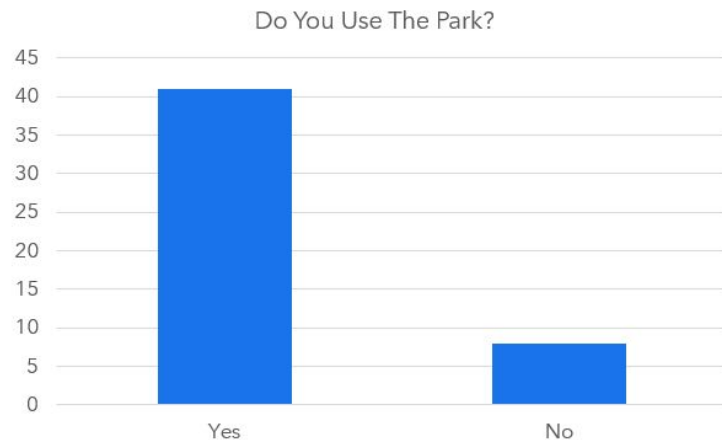
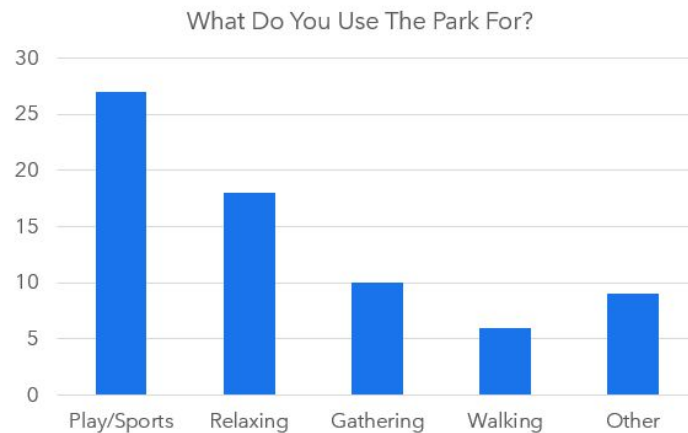
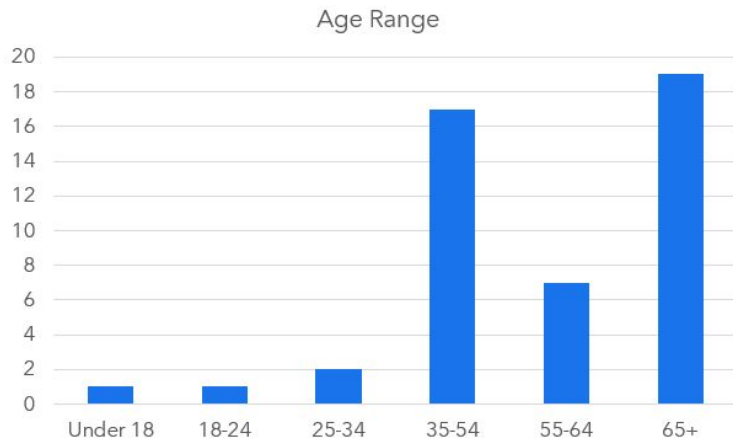
MEMORIAL

Phase 4... Questionnaire

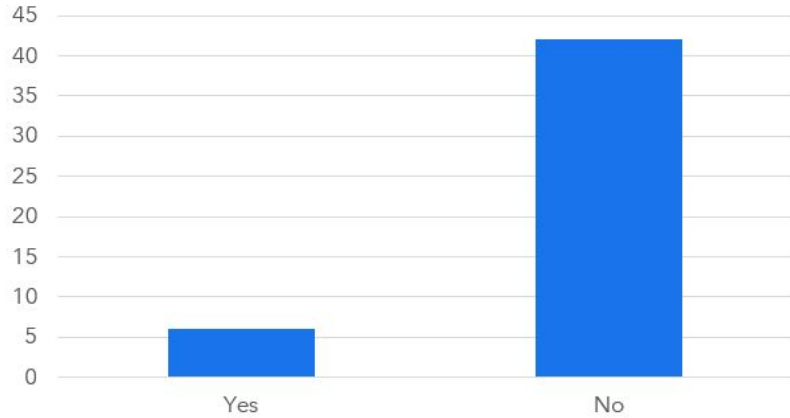
The results

Paper responses: 62

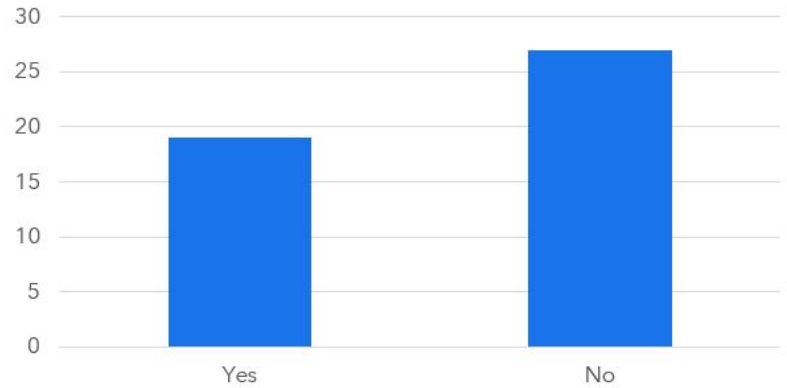
Online responses: 114



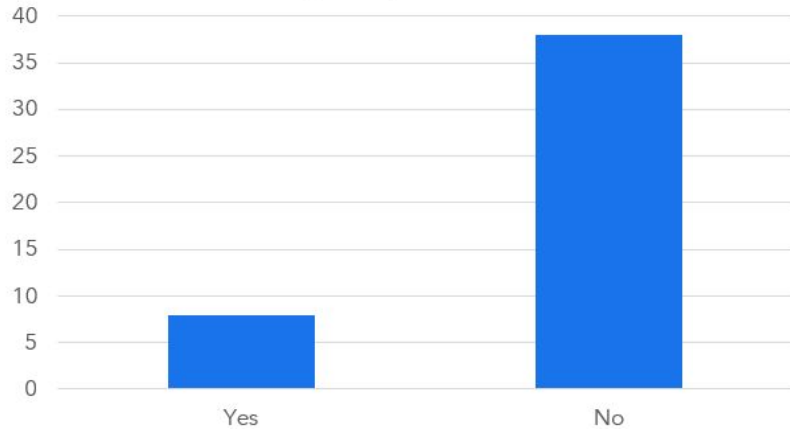
Any Concerns About The Space Changing?



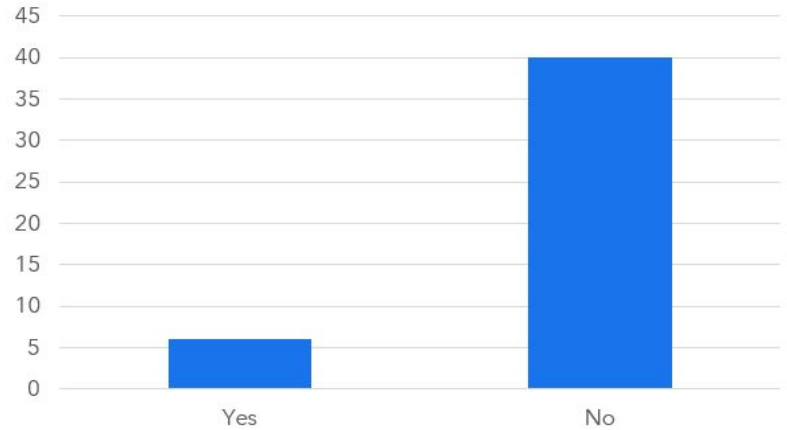
Do You Want Community Involvement Within The Space?



Any Safety Concerns?



Do You Want The War Memorial Moved?



YOUR
Feedback
helped us
create this
concept design

- Fluid shapes
- Sensory experience
- Considerate
- Aesthetic
- Environmental
- Friendly for all ages
- Multi-purpose
- Community Engagement
- Low maintenance
- Safe



*But we wanted to
give you more....*

Phase 4... Design Brief

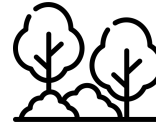
Based on community feedback

Create a impactful sensory experience through designing organic shaping of wild flower meadows, soft plantings and grass areas to fulfil the blend of play and relaxation for community

To improve connectivity with current play park areas creating a deeper sense of cohesion and togetherness

To ensure the site is inclusive and easy access for all users across a wide demographic

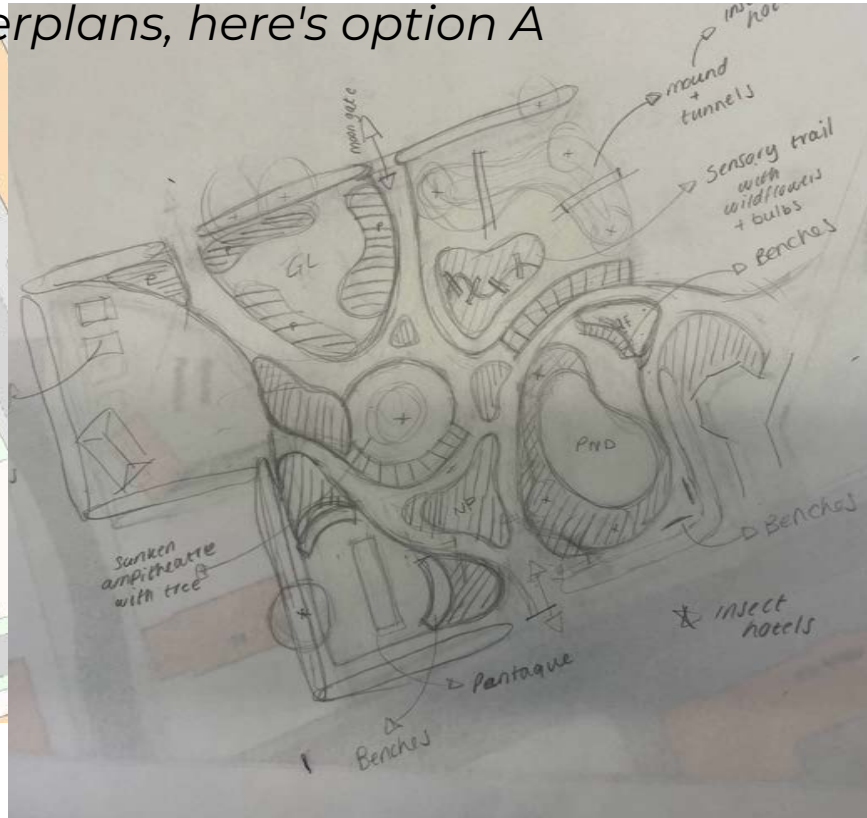
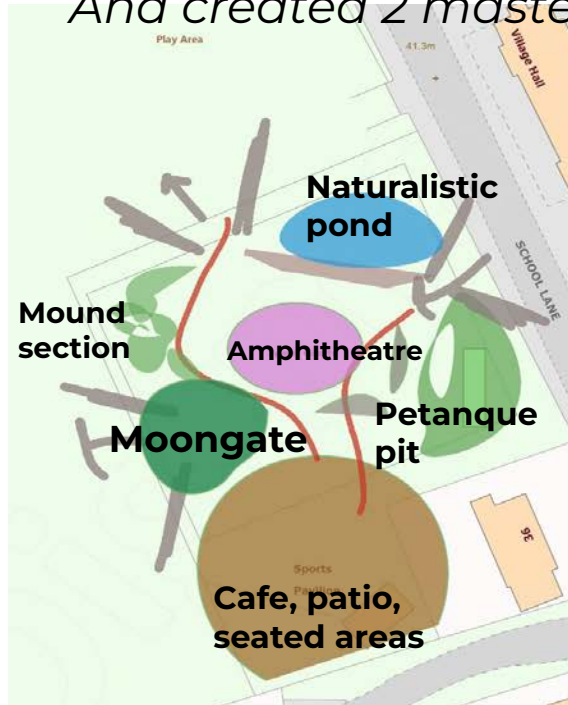
To not relocate the war memorial



Since we had so much reflective feedback and creative outputs with multiple design aspects we thought it would be best to create 2 options...

Phase 5... We listened!

And created 2 masterplans, here's option A



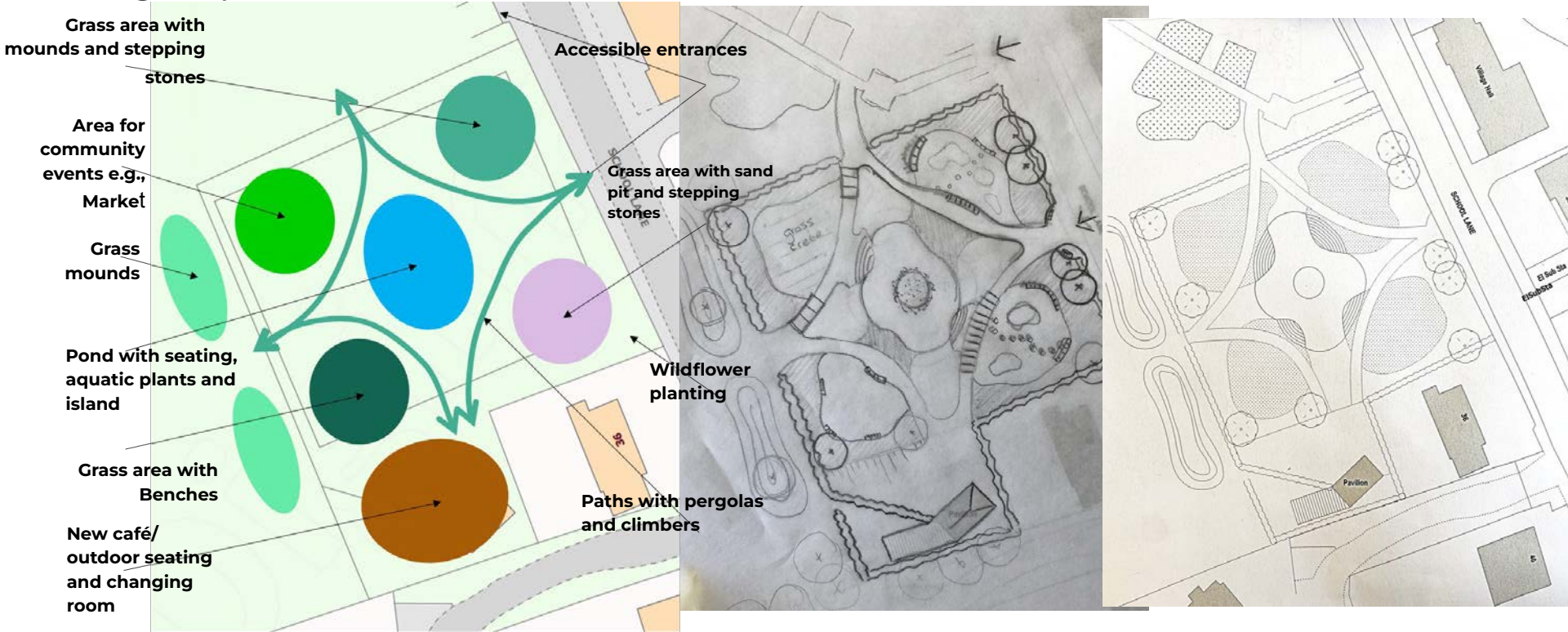
Design A... organic, naturalistic and free flowing

Phase 5 ...
Masterplans Created



Phase 5...

Design option B



Design B... Symmetrical, organic shapes and foci point

Phase 5... Masterplans Created



Phase 6 ...

Material Palette Suggestions

Perennial Mix Palette



From left to right: *Molinia caerulea* subsp. *arundinacea* 'Transparent', *Echinacea purpurea*, *Foeniculum vulgare* 'Purpureum', *Astrantia* 'Roma', *Verbena bonariensis*, *Achillea millefolium* 'Terracotta', *Erigeron karvinskianus*, *Nepeta x fassenii*, *Knautia macedonica*, *Anemanthele lessoniana*, *Helenium* 'Moerheim Beauty', *Salvia nemorosa* 'Amethyst', *Anthemis triumfettii*, *Geranium* 'Mavis Simpson', *Allium* 'Purple Sensation' (bulb), *Artemisia* 'Powis Castle', *Gaura lindheimeri* 'Whirling Butterfly', *Thymus serpyllum*.

Grasses Palette



From left to right: *Molinia caerulea* subsp. *arundinacea* 'Transparent', *Deschampsia cespitosa* 'Goldtau', *Sesleria autumnalis*, *Hakonechloa macra*, *Pennisetum alopecuroides* 'Little Bunny'.

Pond Palette



From left to right: *Iris pseudacorus*, *Ceratophyllum demersum* (Rigid Hornwort), *Caltha palustris* (Marsh Marigold), *Lythrum salicaria* (Purple Loosestrife), *Juncus effusus* (Common Rush), *Nymphaea alba*.

Phase 6 ...

Material Palette Suggestions

New Trees & Shrubs



From left to right: Amelanchier lamarckii, Prunus 'Kanzan', Euonymus fortunei 'Emerald Gaiety', Lavandula angustifolia 'Hidcote'.

Hardscape Palette



From left to right: Addaset New Scandinavian Pearl Resin Bound by Addagrip, Brackendale Indian Sandstone Blasted by Marshalls, Grassguard in Earth brown by Marshalls, Sedum roof covering wooden framed pergola, Landscape Compact benches by Mmcite, Recycled plastic tunnels under earth mounds.

Phase 6...

Design concerns with **solutions**

Water features...



Naturalistic pond, self maintaining with aquatic planting

Low barrier fencing with planting and rockery for protection

Native planting around this zone

Layered sunken pond

Semi-natural pond with central fountain for aerating and minimal maintenance

Low level water with steps leading to the water (allowing the feeding of fish and ducks)

Planting on edges to create a natural barrier for protection

Range of aquatic and terrestrial (but water friendly) planting



Phase 6...

Design concerns with **solutions**

Budgeting...

Multiple stage construction plan

In the event of the garden needing to be built in stages as a result of budgeting concerns:

Green spaces will be built with the foundation for the paths and cafe as well - the green space will consist mainly of lawn space with a minimal amount of low maintenance plants

Red spaces will be the second stage - this will look to incorporate more diverse planting/incorporation of the flower meadow

Blue spaces will be the final parts added in - this will consist of the water features and any other costly hardscape



Our concluding statement: “ Both options of design have creative opportunities reflecting on the brief, adding extra elements such as ecological impacts, whilst maintaining a playful and innovative design giving sensory benefits to all users.

The community feedback was extremely influential to our designs. Providing tailored designs to benefit the community which helped us align our thoughts throughout this process.

Both designs give an experience to explore through natural, organic shapes and curved pathways and enjoy the surroundings, also highlighting memorable features that remain such as the transformed hedge boundary and the pavilion with a new use.”



Thank you!

Lets move to
the sheets

Any questions?